




*Stone simulation
never so stimulating....!*

اليت لاندمارك للأعمال الفنية ش.ذ.م.م.
Elite Landmark Technical Works L.L.C.
GRC & GRP



Understanding what is GFRC

GFRC (Glass Fiber Reinforced Concrete) or 'light-weight concrete' in layman's terms, also known as GRC (Glass Reinforced Concrete) or FRC (Fiberglass Reinforced Concrete) is an amalgamation of materials that are used in countless architectural and civil engineering design products. For the past 30 years, GFRC has been used to create coping, column wraps, cladding panels, wall cap, pier caps, pavers, balustrade systems, monument signs, fireplace, columns, window surrounds, benches, panels, statues, barricades, domes, planters, ornaments, countertops, artificial rock / stone work and a multitude of other applications that are limited only to the architect and his imagination.

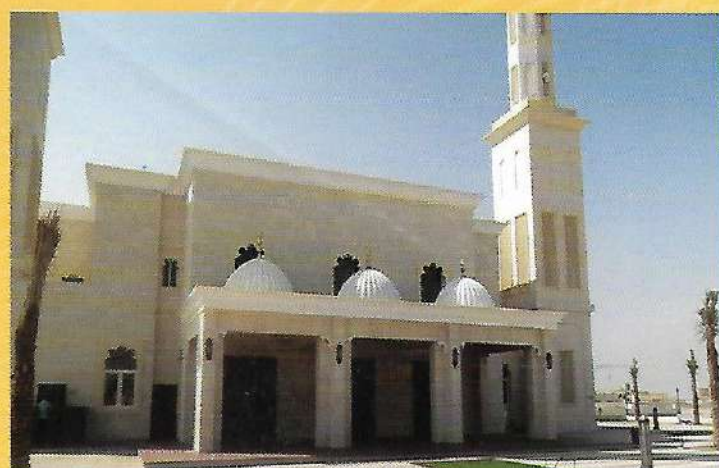
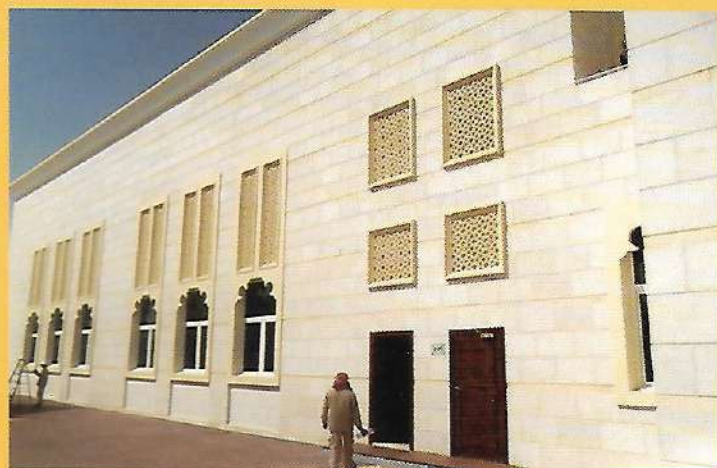
GFRC is a cement-based composite material reinforced with alkali-resistant fibers. Although the properties of Glass Fiber Reinforced Concrete (GFRC) vary according to the production method, mix design, and the type and content of the alkali resistant Glass Fiber, the generic composition of GFRC is a mixture of cement (usually Portland cement), water, fine aggregate, chemical admixtures and alkali resistant glass fibers (AR glass fibers) randomly dispersed throughout the sand / cement matrix. For further information refer to PCI MNL 128 Appendix J. For specifications go to the APA website at www.archprecast.org/gfrc.htm.

The benefits and use of GFRC are as follows :

- o Higher flexural, tensile and impact strength than normal concrete.
- o Low shrinkage rates
- o Proven engineered composite material
- o Great for historical reconstruction for replacing original cement/concrete designs.
- o Can be made to look like traditional precast, terra cotta, carved stone, cast stone or limestone building components.
- o Strong and durable (against fire, water, freezing temperatures and salt)
- o Wonderful for concrete wall panel construction
- o Unlimited design and aesthetic selections
- o Natural look in a custom design without using real stone
- o Lower installation costs
- o Faster installation
- o Lightweight (up to 12 times less weight than regular cement or concrete)
- o No rust or corrosion



COMPLETED PROJECTS



COMPLETED PROJECTS





COMPLETED PROJECTS



COMPLETED PROJECTS



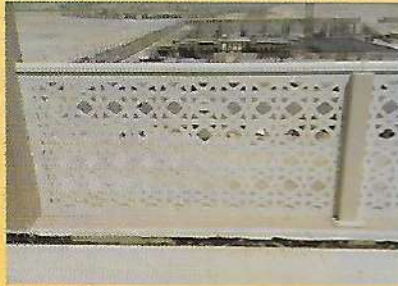


GRC PRODUCTS

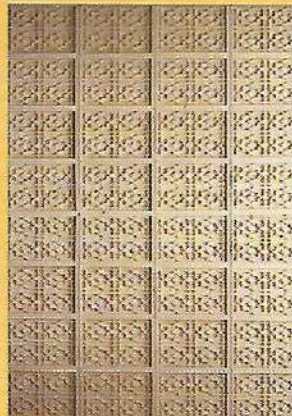
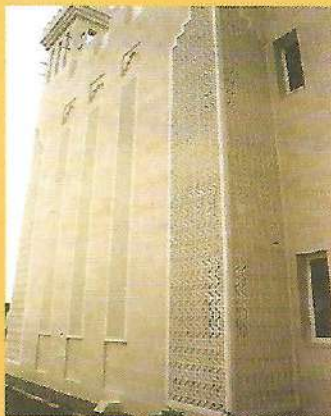
DOMES



BALUSTRADES



PANELS



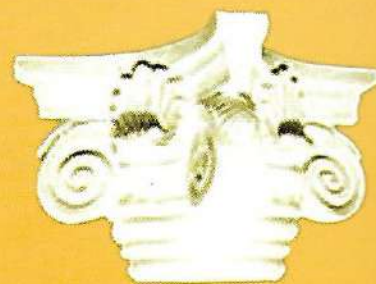
GRC PRODUCTS



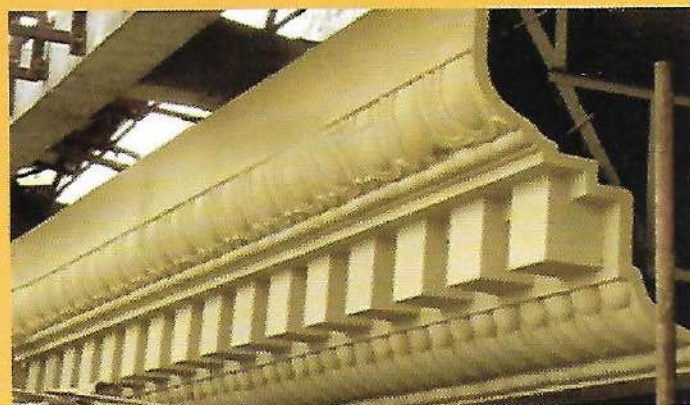


GRC PRODUCTS

COLUMN CAPITAL & BASE



CLADDING



GRC PRODUCTS



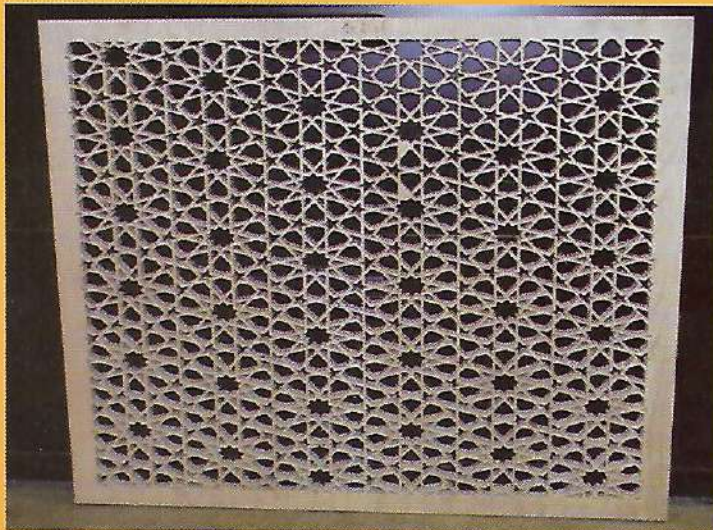
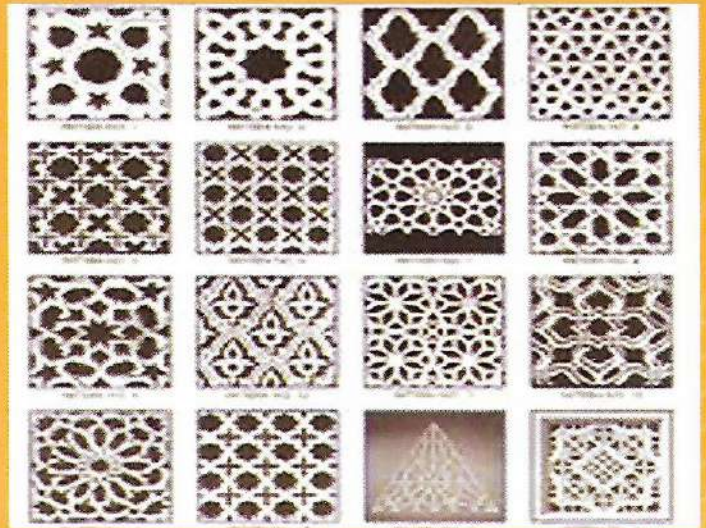


GRC PRODUCTS

BRACKETS & PLANTERS



CLAUSTRA



GRC PRODUCTS



(GRP)

We specialize in all types of fibre glass jobs such as decoration works in various models, car parking shades in different sizes and models, GRP lamination of manholes and underground water tanks, in-site lamination of manhole shaft joints and manhole benching, production of GRP enclosures, water tanks in different sizes and models, templates, flower pots. GRP ladders etc.

(GRG)

Specialize in all types of interior decorative works.

GRP (Glass Fiber Reinforced Plastic)



GRG (Glass Fiber Reinforced Gypsum)



اليت لاندمارك للأعمال الفنية ش.ذ.م.م.

Elite Landmark Technical Works L.L.C.

Tel: +971 4 2673346, Fax: +971 4 2673375, P.O. Box: 60222

Damascus Street - Al Qusais - Dubai - United Arab Emirates.

Email: elcongrc@emirates.net.ae - Email: elcongrc.emirates@gmail.com